



Quarterly Progress Report

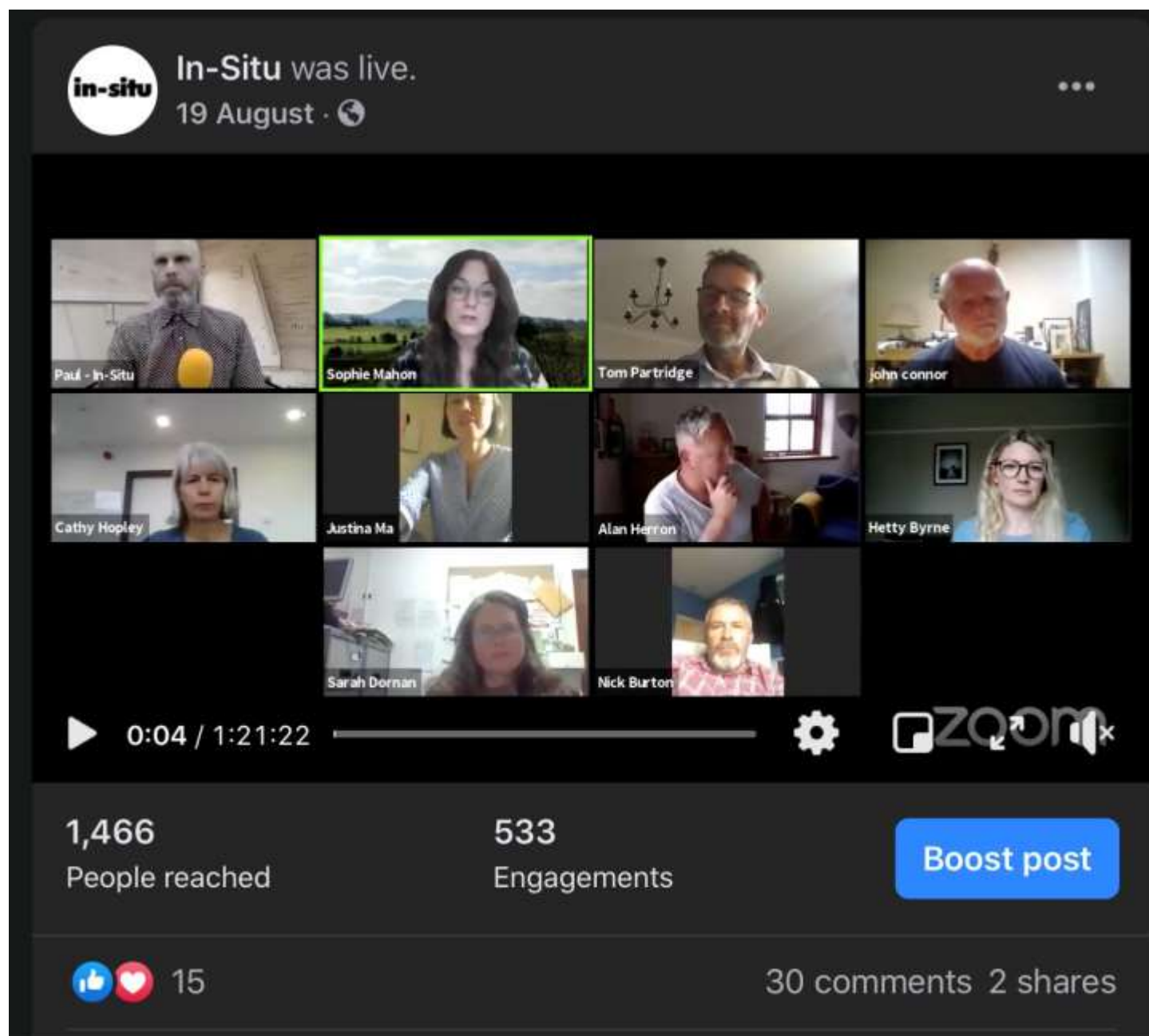


A Family enjoying the on-line John Muir Trust Discover Award Challenge run this summer

July – September 2020
Year 3 Quarter 2

Summary

Once again our report on progress is sadly full of phrases such as 'due to current restrictions' and 'socially distanced meetings' as the Coronavirus pandemic continues to affect our work. We have all found this period particularly frustrating as we have seen the easing of lockdown and then the return of local restrictions, firstly to Pendle borough and then to the whole of Lancashire. However, despite this most of the project leads and LP team have continued working, mostly from home and also out and about in the landscape area, and some of our volunteers have been active, but not the main Pendle Hill team. We have all been discovering new ways of working and finding creative solutions to the issues: several planned public events went on line and our John Muir Award summer programme also went 'virtual'. We have held outdoor team meetings and meetings with partners and the public; 1 to 1 support sessions with participants; and any number of site visits and maintenance jobs have continued.



Screenshot from zoomed 'Digital Gathering 2'

The Environment

Restoring Traditional Boundaries

This quarter tenders for five **hedgerow restoration** schemes (Tranche 3 of the hedging in the project) were returned from the contractors. These were assessed and the contracts were awarded for a total of 2074m of hedging on five farms totalling around £30,000 of spend. This makes tranche 3 the biggest round so far, work is due to start in November at Hathaway Fold, Lower Gazegill, Mountain, Sabden and Schofield farms, and also at Laneside farm where hedge planting work was deferred from last year. All work will aim to complete by March 2021.

The next commissioned **wall restoration** - 392 m² at Meadow Bank farm - was due to begin in Q2, however, this has been delayed until 2022. Instead, the wall that was due to be restored at Little Mearley Hall in 2022 will now begin early in June 2021.

The **dry stone walling competition** had to be cancelled due to Covid-19 restrictions, but this will be re-scheduled. Similarly the 10 day dry stone walling training course and the two day hedge-laying course have also been postponed. It is also likely that the hedgelaying competition next March will be cancelled.

Preliminary GIS based work has been undertaken within the area identified for the Padiham flood alleviation scheme as potential activity to be undertaken for biodiversity net gain. Farms within the catchment have been identified and those with priority hedges prioritised, as well as those farms within the Farmer Network. As the Environment Agency flood management scheme has not been signed off yet, further prioritisation of hedging work within this area will take place in Q3 when we hope to know the scale of the budget available under the scheme, which we hope to be able to utilise in the hedging season of Q3 and Q4 of 2021-2.

All the above activity has been greatly helped by having Ian Hart contracted to work on the project checking progress, checking specifications and undertaking pre-start and progress meetings, and signing off completed work. In July the project was covered as a feature article in the Clitheroe Advertiser and other local papers.



The hedgerow at Lower Gazegill farm selected for restoration, before the work begins

Restoring Wildlife and Priority Habitats

A plant species and habitat mapping and survey was undertaken at **Clarion House wildlife discovery site** the beginning of September. This will be written up during Q3 and supplemented with further survey during Q4 and the beginning of yr4, hopefully with volunteer input at that time.

In September members of the Clarion House Friends group undertook the meadow management on the site – cutting and clearing the meadow area. It is really fantastic to work with such an enthusiastic, proactive and capable group. Members of the PHLP team have been to help out as well, raking up and adding more meadow seed to the restoration site.



Colin from the Clarion Friends group, 'peening' his scythe ready for action

A survey of the meadow area at **Barley wildlife discovery site** has been undertaken, in order to see how the site is progressing and to decide what further work is needed. The site was mown and raked in September as in previous years, and seed added according to results of the July plant survey. The survey showed that whilst there had been good establishment of some species, yellow rattle was present at a very low frequency, and so brush harvested seed rich in this species has been added.

At **Worsaw Hill discovery site** a public waxcap hunt has been postponed to Autumn 2021, and plans are in place to carry out further scrub control this winter – by staff and/or volunteers.

The new **Pendle Meadows** project developed during Q1 has been progressing well. Ten meadows have been selected for restoration and enhancement work. The sites are:

- Cockshotts Meadow
- Clarion House meadow
- Barley Discovery site meadow
- Gannel House meadow
- Spring Wood meadow

- Lower Gazegill (four meadows)
- Pendle Heritage Centre meadow

The sites have all been surveyed and specific seed mixes selected for each site. All the sites were cut and cleared within Q2 and some have already had their seed added. The rest of the seeding work will be completed within Q3, once the seed order has arrived.

In the development phase we identified a number of county **sites of ecological importance** (BHSs) which were in need of management. We are now aiming to work with the individual farmers or landowners to deliver this. This might be by providing survey results and input to the development of forthcoming agri-environment applications, giving advice on habitat management, or providing practical help (such as scrub control on Worsaw Hill) with our Pendle Hill volunteers. In Q2 the two United Utility owned sites were surveyed, and discussions about management going forward are underway.

Creating and Managing Woodlands

We have spent the last quarter preparing woodlands for this winter's and next year's planting season, and continuing INNS work where COVID restrictions have allowed.

We have 3 **Woodland sites** lined up for this winter; Schofield Farm, Hollins Farm and Cockshotts Farm. The Schofield and Hollins woodlands have been designed to reduce significant soil erosion and at the site at Cockshotts we will exclude stock and reduce faecal inputs to the watercourse. The fencing works are out for tender for Cockshotts and Hollins, and the site at Schofield will be fenced by the farmer in time for planting season.



Land adjacent to a woodland at Cockshotts farm, Sabden, where new woodland will be created later this year.

Rob, our **INNS** co-ordinator, returned from furlough in July and since then we have been monitoring the feasibility of organising volunteer days. We have been limiting numbers to between 4 and 8 depending on restrictions at the time. We have been able to continue Balsam removal across our INNS sites and continued with some woodland management in Badger Plantation

Restoring Footpaths and Repairing Peatland on the Summit

Work this quarter has centred on the 'Summit Revisited' climate resilience work. £20,000 of contingency budget has been released to the project and work is now underway. The contractors are Settle-based Conservefor, who worked on the original Summit peat project in 2018.

We have been able to fund additional **timber dams** to further reduce flow rates in the five large gullies running parallel on either side of the flag path; **coir logs** to slow the sheet flow over the bare peat on the summit; cutting and spreading of moss rich **heather brash** on the same summit area to cover the bare peat and protect the additional seed to be spread; and a layer of **geo-textile** to cover the sides of the large re-profiled gullies where the brash put down in 2018 was carried away by the flood water in February of 2020.



New timber dams installed in the narrow gullies and new coir logs in place on the summit: both will slow the flow



Geo-textile laid to protect the gully side, ready for seeding & brash; revegetation on site 2 years after the original work

The work began in early September and will be completed by the end of March 2021. The delay is because timber and geo-textile supplies have been interrupted by Covid-19, and so the contractors have now come off site and await the delivery of materials to complete the work.

Monitoring of the bare peat areas where the brash was not affected by the February 2020 storms shows really good colonisation by mosses and heather, and the plug plants planted both by the contractors in 2018 and by volunteers in early 2019 have established really well.



The Economy

Enhancing Visitor Gateways and key routes to Access Heritage

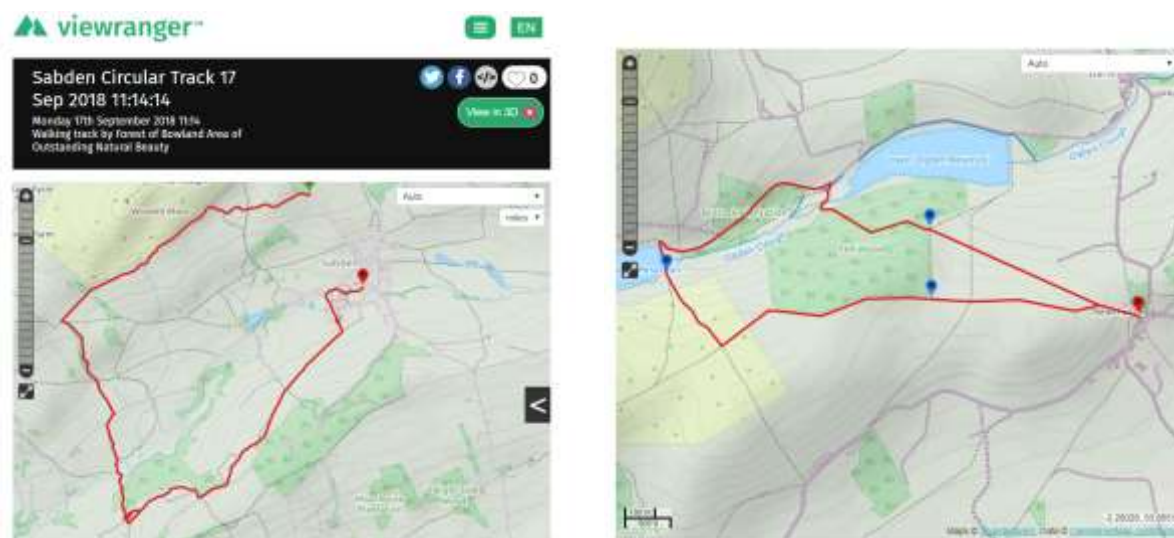
As mentioned in the last report construction work at **Heys Lane** was put on hold due to a public petition opposing the works. This has been a difficult and challenging time for all of us involved and some hard decisions had to be made. Despite support from neighbouring Roughlee parish council, a meeting held with Barley Parish Council and residents outlining the technical specification of works was met with a pre-prepared statement on behalf of the Barley parish council stating that they felt they could not support a project that attracted more visitors to the village.

Following NLHF support the PHLP Board decided to put the proposals on hold for 12 months allow for Barley residents to consider the project further, using the Parish Council to convey information between Residents and PHLP. The main funder for the works LEF is happy to wait or to transfer their grant to another similar project providing Trumper and all ability access. The decision has also been made to defer production of any further visitor interpretation at Barley village, due to local opposition and sensitivities; although we will honour our offer of support for car park improvements once a contractor can be procured by the parish council

Following this decision both the Project Officer and Graduate Trainee have been in touch with Rights of Way Officers and Parish Councils in other parts of the LP to research potential alternative projects. A shortlist is being compiled including one with good potential, and landowner discussions are about to begin to establish the feasibility of these.

At **Spring Wood** a Planning Application for change of use of the visitor building to allow food sales has been submitted with a decision to be made imminently. LCC Assets Team are now engaging in discussion to progress the management of the build project, hopefully due to start in the New Year.

7 new low-level short **circular routes** are being developed and five have now been uploaded to the View Ranger App as new promoted routes. These will link in with 7 longer routes to be developed as alternative routes to the Summit of Pendle Hill, in order to take pressure off some of the well-used visitor destinations.



ViewRanger walk routes for Sabden and Newchurch village circular walks as shown on the App

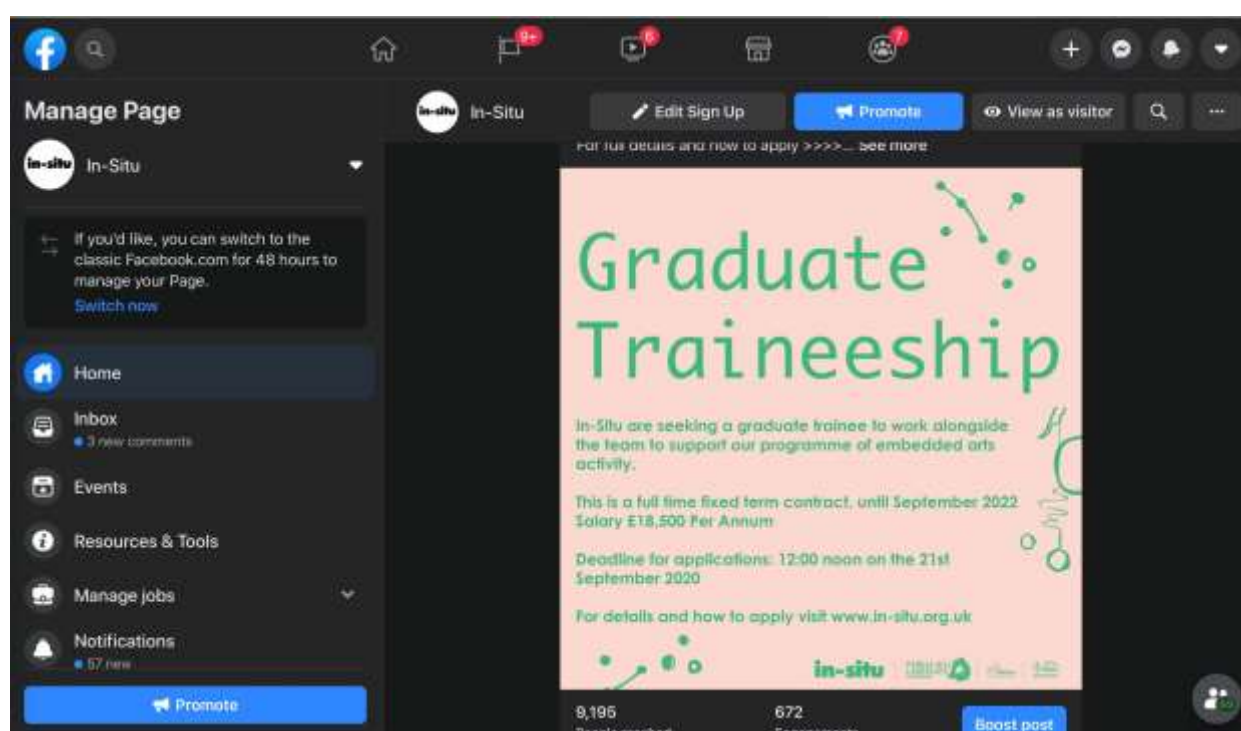
After negotiations with the Landowner and comments from visitors, new signage for the **Downham concessionary bridleway** has been ordered and awaits delivery. There is a slight delay in supply because of a shortage of materials. A dog waste/litter bin has also been arranged to be located near to Greendale View Kitchen on the route, funded by the parish council and maintained by RVBC, this again is after listening to visitor feedback.

Offering Apprenticeships

We have now been able to recruit all the apprentices and trainees, bar the final LP team role (due April 2021).

The Pendle Heritage Centre now has 3 apprentices in post: Emma is a level 3 Horticulture apprentice with Burnley College, working on the grounds and gardens at the Centre in Barrowford and also liaising with the LP team regarding woodlands and meadow management on site. Jenna is based at the Heritage Centre, and during the pandemic also at Higherford Mill, and is taking an level 2 apprenticeship in Business Administration at Nelson & Colne college. Lewis is a level 2 apprentice in Painting & Decorating at Burnley college and will be carrying out heritage building renovation work mostly at PHC but also at other heritage properties managed by the Trust as part of their heritage renovation team.

In-Situ have recruited a graduate trainee, Calum, who starts work in late October as a project management trainee supporting the staff team and visiting artists on The Gatherings strand. Both In-Situ and Ribble Rivers Trust were inundated with applications – over 300 across the two posts – and shortlisting and appointing was very challenging, but we hope to have 2 very able and committed trainees supporting the team. RRT hope to appoint their trainee by the end of October.



Sense of Place and Sustainable Tourism

Two **Foodie Foray events** were delivered for the project by Danielle Kaye, Medical Herbalist. Due to the current COVID restrictions we delivered these as part of our online programme, via Zoom. 20th September: 'A Herbal Medicine Forage' and 22nd September: 'A Seasonal Foraged Feast'. These events built on the Foodie Foray events that were delivered in Years 1 and 2 during September and are a celebration of local, seasonal food in the Pendle Hill and wider Forest of Bowland area. Danielle took us on an online journey, bringing people closer to nature, to learn about some of the edible and medicinal plants growing in the local area.

They were attended by 70 participants and the feedback from the events was all very positive. We filmed some of the demonstration elements of the events so that they could be pre-recorded and played during the event and also for sharing to those who weren't able to attend. The films and resources for both events can be viewed here: <https://www.forestofbowland.com/online-event-links> Feedback from participants:

- This has been fab thank you I'm off foraging ASAP 😊🌿
- Wonderful - thank you. Off to walk the dog and see what I can find!
- Thanks you -can't wait to make some Hedgerow vinegar this week.
- Inspiring:) Many thanks
- That looks so wonderful - I'm going foraging for elderflower berries this afternoon. Thank you so much, this has been so enjoyable. X
- I've loved this foraging session, thank you very much to you all for organising this. I'll be registering on the online course today - after I've been out foraging :)
- Thank you everyone that was fab, really enjoyed this. I feel a foraging walk coming on!
- I walk past elderberries every day. so I look forward to using them
- Thank you. excellent session
- Thank you very much for this, hugely interesting, a Sunday morning very well spent.
- Thank you, very interesting.
- Thank you for this, very enjoyable.
- Brilliant, thank you. Guess what we are doing this afternoon
- Thank you very much great ideas to improve our health
- Great energy, felt like you made it achievable thank you :-)
- Thank you very interesting and worth attending this morning
- Thank you very much



Commissioning Research into the value the landscape offers to the economy and community services

The **72 Seasons project** has continued apace and is now nearing the end of its year long study. Participants have continued to notice and record changes in nature and the effect it is having on their well being. A blog on part 2 of the study, covering the spring months can be read here <https://www.theevaluator.co.uk/72-seasons-the-agreed-18-seasons-of-spring/> Interestingly this covered the Covid lockdown period, here is an excerpt:

We never could have predicted that this project around noticing nature and wellbeing would have such a turbulent year to follow. It almost feels unreal that in 2020 we happened to carry out a year-long nature project that people can take part in from home. As a researcher you cannot get much luckier than measuring wellbeing with a group of people both before and during Covid and hopefully continuing as we come out of Covid.

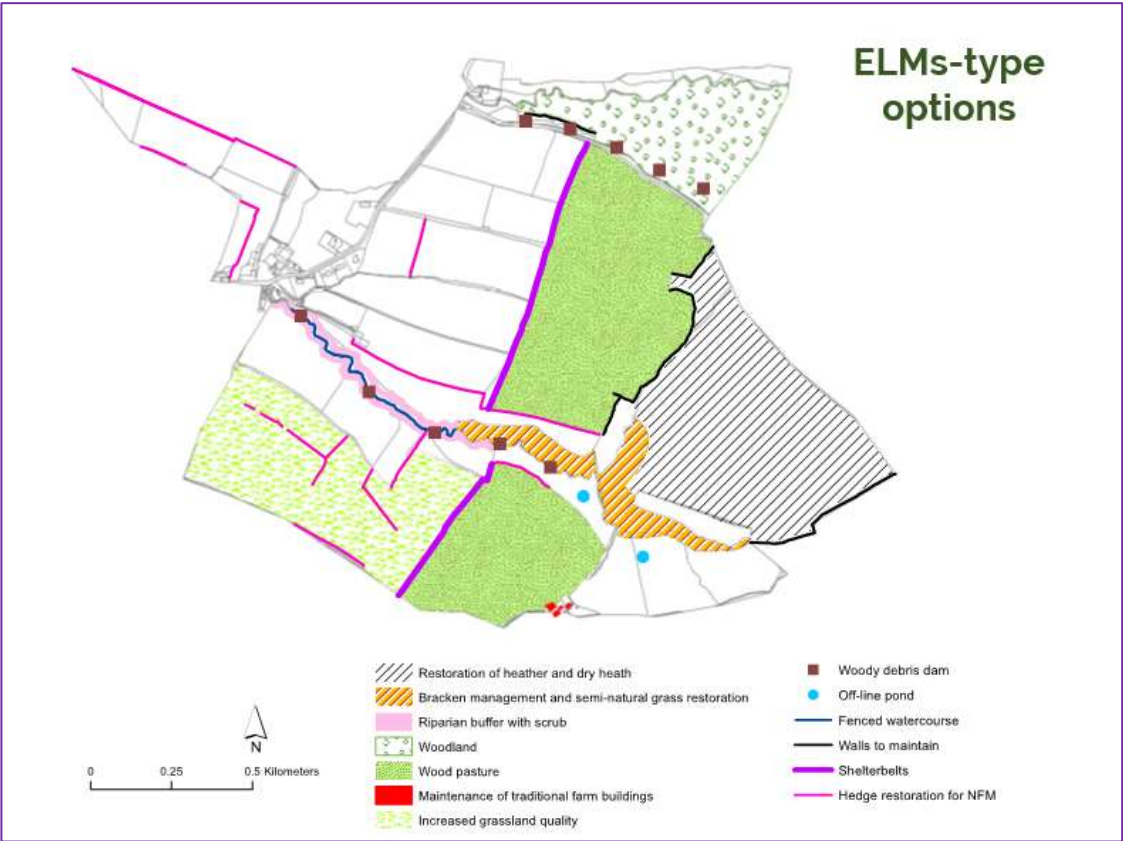
We have measured wellbeing and health in detail during the most impactful year, with dramatic changes in life and huge effects on wellbeing. We have been there, live, measuring away and running the project, mostly just as planned. It is also crucial to note that nature almost feels like the only silver lining of Covid; our rivers cleared up, the skies were free of aeroplanes, and traffic was almost silent. Looking at Spring happening, quite normally, while the whole world around us changed beyond all recognition, was a source of comfort for me and for many others taking part in the project.

"This year with lockdown I somehow feel even more aware of nature and how it is thriving and blossoming without us – almost as if it is benefiting from our absence. Quite humbling."

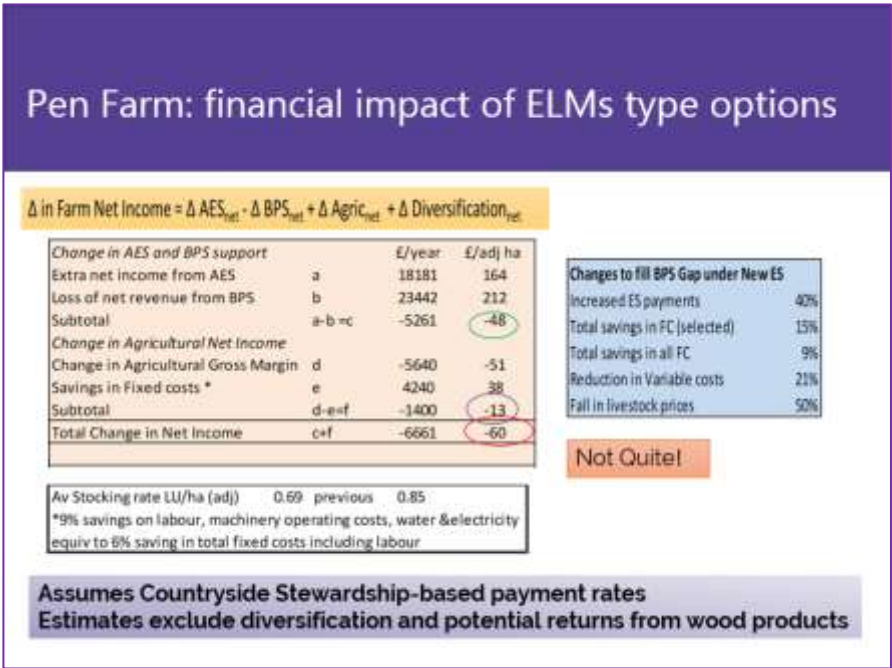
"I don't know if it's what we are going through at the moment but I'm noticing the different trees and how they open up and the different time trees open up... the glorious different green colours in the trees. I've noticed the blossom and spring flowers and been sending photos to my mum as she has missed seeing all the spring flowers while out and about. It makes me realise what we take for granted usually and is opening my eyes to the wonder around the beautiful part of Lancashire I am so fortunate to live in and be able to see while in lockdown."

"Really enjoying taking part. It's particularly good to focus on nature during these weird times."

The **Public Money for Public Goods** research is also nearing completion. Mapping of natural capital and analysis of farm business income for the 3 farms involved has been completed and fed back to them; and the researchers and LP team have been involved in creating a hypothetical or 'imaginary farm' called Pen Farm, to use as a case study in the final report. This showed how a hill farm business on Pendle Hill is heavily reliant on agri-environment and basic payment support to be financially viable. Without these subsidies (forecast to happen in 2-5 years' time) farms in our area will need to make tough decisions about the future of farming, and with that goes the future of our landscape. The researchers identified that if a new system of support is based on current payment levels to carry out environmental land management then farmers will still make a loss: therefore levels of payment on any future system need to be increased for them to incentivise farmers to produce public goods such as planting woodland, developing natural flood management interventions and enabling greater public access. The full report will be published in quarter 3. A summary was presented as part of the Northern Real Farming Conference on 8th October and was well received.



A slide from the conference presentation showing the proposed new land management options for Pen farm



A further slide showing the financial implications of the proposed changes

Everyone

Running a Community Grant Scheme

The Year 3 Pendle Hill Fund application window opened from 3rd August to 14th September. We received 3 applications in this time.

The Grants Panel met virtually to discuss the applications on 28th September. They agreed that all 3 applications were very good, and approved grants for the amounts requested.

All applicants were notified on 28th September that their grant applications were successful and they have now been provided with the relevant paperwork. A total of £25,308 was committed by the panel.

These applications were:

- Calico and Clogs – a heritage trail around Sabden led by Sabden parish council: £8,887
- Rimington Heritage Trail – led by volunteers from the Rimington Recreation Association: £8,421
- Habitat and Woodland Management at Park Hill – led by Heritage Fund North West at the Pendle Heritage Centre: £8,000

All these projects are focused around local heritage (history and natural heritage), engaging with local communities and offering a new opportunity to explore these areas. The Calico and Clogs project aims to involve the local primary school and volunteers from the Pendle Radicals project.

We have also accepted a **small grants** application from Whalley Parish Council, to update 2 benches in the area. These benches will include a plaque about two local High Sheriffs from the Clerk Hill area. This information will also be added to a local website, and will aim to engage local people in this portion of history.

On 28th September, the Grants Panel also accepted requests from each of the Year 2 projects to extend for 12 months, because of the impact of the Global Pandemic. They also accepted requests from the Spring Wood Pond and Access project to change some of their proposed work, from the installation of a dipping platform (deemed to be unsafe) to more access improvements.

Providing Supported Activity Sessions for people dealing with mental health issues and social isolation

Normal PEN sessions have yet to restart.

Throughout July we continued with some 1 to 1 individual walks with existing participants. These were well received, however participants (and staff) were keen to try and reintroduce group activity.

In July the PHLP team acquired use of a site at Hollins farm in Downham, courtesy of the Downham Estate. This site contains an indoor room, an old dairy, plus a yard containing a number of raised beds which need a lot of management, but has the potential to be used as a great location for different PHLP groups going forward. It was hoped that PEN participants could bring the beds back into management this year.

We planned for 3 weeks of activity in late August and early September, involving a walk from a different town on Monday afternoon, and a PEN session at the garden site (Hollins) on the Monday. The Little Green Bus Company were happy to restart operations, with their Covid 19 measures in place, from just one pick up point. Attempts to restart activity in this way again didn't quite go as well as we would have hoped. The level of anxiety is still quite high, and in fact many people weren't too keen on getting on a minibus, along with some confusion about what people were and weren't allowed to do. We also did not have a lot of time to advertise these activity weeks because of the constantly changing circumstances.

In early September, with the Little Green Bus Company happy, we planned a 6 week block of activity on Thursday afternoons – trying to resume some as-normal PEN activity as possible. We also planned 6 weeks of a Monday afternoon walk, rotating around the local towns. However, with plans in place to restart Thursday sessions on 1st October, earlier that week the joint decision was made to cancel these sessions yet again, as with increasing restrictions and guidance coming into place in Lancashire in late September, the element of shared transport was considered too much of a risk for the PEN sessions.

Jayne adds, at the time of writing: ' We still aim to go ahead with the Monday walks (in fact the first, with 2 groups of under 6 people each has already run), along with any other 1 to 1 walks that I find suitable. I am also happy to facilitate outdoor gardening sessions at Hollins for those with private transport. Because of the lack of other projects available at the moment, we are conscious that there is a great need for mental health support and provision. If the demand for supported walks or garden sessions increases, I will try and meet that as much as is possible.'

Creatively Engaging People in our Radical History

MPA's team continue to work reduced hours from home. Some planned public events were postponed, notably the Rosie's Plaques national tour, which was due to spend a weekend at Clarion House in July.

Work on the Radicals Trail is now taking visible shape, although in current circumstances every stage is taking longer than anticipated. The fabricators have produced a test piece to demonstrate the look and feel of the engraved stone panels, and to check the viability of their methodology. This looked as good as we hoped, and the first two actual panels are now close to completion. We also conducted further site visits with dummy panels to establish precise positioning at most locations. Design work continues on the final supporting materials.



Mock-ups of the final plaques to be installed at Downham information barn and Fox's Well on Pendle Hill

Work is also progressing on the publication to celebrate the Banner Culture exhibition. Initial design proofs look very exciting, and we are working towards going to print around end of October.

In September we launched the film of the punk project Sick of Being Normal, with a very convivial online event featuring some of the principals on the same evening. The 16 minute film <https://vimeo.com/456176942> has been very well received, and we are delighted to say has received over 700 views to date. We also released an online version of the photozine for the project, featuring newly commissioned photography and interviews with many of the prime movers of that cultural scene <https://online.fliphtml5.com/dsqhf/pgif/#p=1> SOBN kicked off with a music and exhibition event prior to lockdown. It will continue with further live activity when circumstances allow.



Zoom shot of the SOBN launch event

Jennifer Reid's Lancashire Dialect Reading Group, inspired by Paul Graney, continued and concluded with the last three monthly sessions. We will reconnect with the group when we are able to offer them a research trip to the Graney Archive at Manchester Central Library.

Quarterly Report

Radicals volunteers provided material and discussion for the first of the Digital Gatherings in August. Regular volunteer Nick Burton also provided a talk for the Festival Bowland online series, focused on the countryside movement, and pioneer spirits Stephenson and Leonard.

Since lockdown, we continue to keep in touch with Radicals volunteers via the Facebook sharing group, and through regular posts by contributors on the project blog. New blog posts this quarter:

<https://pendleradicals.wordpress.com/2020/07/21/wonder-women-walk/>

<https://pendleradicals.wordpress.com/2020/09/16/what-is-normal/>

<https://pendleradicals.wordpress.com/2020/09/17/still-sobn/>

Delivering Community Archaeology sessions and related training

With limited volunteer or group activity available, the Community Archaeology project has been very quiet over the past few months. NAA are happy to consider a potential extension to the project in 2022. Communication has continued between PHLP and Pendle Archaeology Group.

Threads

Supporting Volunteering and Learning opportunities across the scheme

Planning has continued to re start **volunteering**; we finalised which activities we would be offering to our volunteers, based on what we can safely deliver and what needs to be done within the projects. Approval was received to restart volunteering from LCC head of service in the beginning of September.

However, due to the increasing restrictions and guidance brought into Lancashire in September, a few weeks later this restart was postponed by LCC.

We will continue to plan and put everything in place for when we can safely restart volunteering, although with the current restrictions, we don't envision that they will be very soon.

This recent set back has been incredibly frustrating, however we remain in contact with our volunteers and hope to restart soon.

We were hopeful to restart **Get into Volunteering** sessions, in line with other volunteering Risk Assessments and guidance, however with the second postponement of volunteering, this too has now been postponed.

No face-to-face **informal learning activity** has taken place since the end of March, this includes Little Saplings and school holiday family events. Instead we launched an online **John Muir Family Discover Award** project in July. This was to replace the original John Muir face to face engagement sessions that were planned for April to September, but had been cancelled due to the pandemic. The online John Muir Award was advertised to families living in and around the Pendle Hill Landscape Partnership area, through directed emails, via local groups, press releases and through local school contacts.

The engagement project was advertised as a fully inclusive opportunity, for all ages and as a family summer holiday challenge, which would help and encourage families to spend more time outdoors and reconnect to their local landscape. Families were required to register their interest, in order to receive the weekly John Muir challenge newsletters. Six newsletters were sent out as the main communication method and primary means of support (plus an online introductory meeting via zoom). Each Monday newsletter contained a nature/heritage theme, information and activities – encouraging approximately 5 hours of activity per week.

Each week focused on a different theme, including minibeasts and pollinators, wildflowers and hedgerows, birds, local history and archaeology, and finally Pendle Hill at night. Resources can be found here: <https://pendlehillproject.com/john-muir-weekly-challenge-resources> Throughout the project, weekly films were made available to offer simple how-to guides on some of the activities. A closed Facebook group was set up for the participants to allow sharing of ideas. The two project officers were available to contact via phone and email, to allow all participants to ask for help when required.

Overall, 108 families registered for the project online. 60 families signed up to the weekly newsletters. 27 families started the weekly challenges, with 20 families' completing them all, therefore accomplishing the 25 hours required to receive the award certificate. Two celebration events were held online and a final email sent out to all participants showcasing their achievements via a highlights film that was put together with film footage and the families evidence photos they submitted. The film can be viewed here <https://www.youtube.com/watch?v=Go532F3XEdY>

Quarterly Report

Feedback includes "for minibeast and pollinator week we made a bug hotel and spa for them filled it with lots of leaves and twigs we collected on our walk. We found lots of butterflies, we got some pics but they were very fast, but we also took some of bees collecting pollen. This was our favourite week"

Another family said, "We have thoroughly enjoyed every minute of the John Muir Award and would like to thank you all for your support and guidance throughout."

A family who were new to exploring the outdoors stated "Thank you so much for organising this, we have had lots of fun and learnt a lot along the way."



Snips of the short films made for the challenge by Jayne and Alison



Photo submitted by one family participant

Based on the success of the virtually supported John Muir Award, we have now started a fortnightly 'Connecting to Nature' engagement email. This aims to provide information, learning opportunities and activities for families, adults etc. over autumn/winter to encourage people to remain connected to nature and continue accessing the outdoors.

Outdoor learning with schools has also proved very difficult. Alison spent much of the summer attending training and preparing guidance for working with schools in a Covid-secure way in the future. Two sessions

were successfully run with Lomeshaye Junior school in September before a positive test in the class halted the other two planned sessions. Planning and preparation of resources continues and Alison hopes to hold a few more sessions before half term and then to hopefully re-start next Spring.

We also supported a series of on line events with the AONB team, providing learning for all ages. The events have included hay meadows, archaeology, bats, black grouse, rewilding, Roman roads and peat restoration.

Between June and end of September, we jointly ran 17 sessions which attracted almost 600 attendees. These virtual sessions have proved popular and have reached new audiences for us – from across the country. They also make it possible for us to connect with people who wouldn't normally be able to join us face to face; whether that be for health, transport or other reasons.

Holding the Gatherings and annual events to engage new audiences

As a way of connecting to the community during a period of lockdown restrictions, we hosted a season of talks throughout August 2020, our **'Digital Gathering'**. This took place in lieu of our annual face to face gathering which was due to happen in May. The Digital Gathering was a season of open format online conversations exploring our local landscape and communities, alongside intimate in-conversations with artists and specialists working in these areas. This was held entirely on Zoom with people attending from across the area and further afield.

We hosted 4 open community conversations around different themes that go deeper into PHLP and the activity, ideas and challenges behind the programme and those involved. These were:

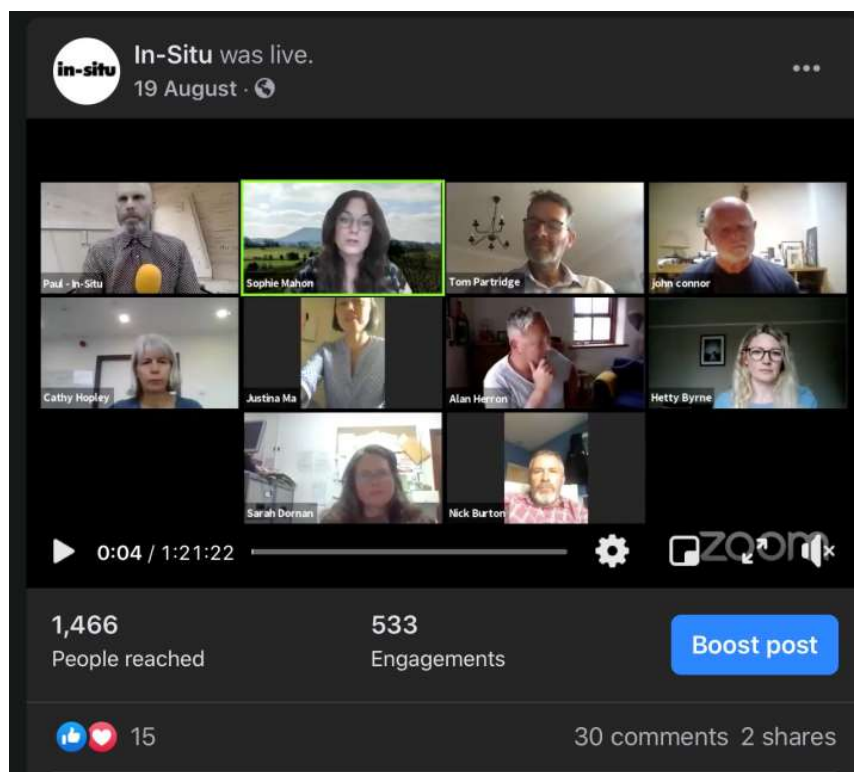
- **Traditions, Stories, and Folklore - 5th Aug**
- **Interventions into the landscape - 12th Aug**
- **Sustainable Tourism and increasing access to the hill for everyone - 19th Aug**
- **The Future of Communities around Pendle Hill - 26th Aug**

The above series of talks were hosted by program coordinator Sophie Mahon and Paul Hartley from the In-Situ team and used an open format style with everyone able to contribute to the discussions equally. The sessions were live-streamed on Facebook and accessible via Facebook afterwards. These conversations were open to all and promoted across on PHLP and In-Situ's social media as well as through community pages and contacts. This included a range of LP project representatives (i.e. Ribble Rivers, Alison, Nick Mid Pennine); artists (working on PHLP projects or from our artists network), farmers and land owners, local councillors, young people from 'both sides of the hill', residents from rural villages and towns, funders, heritage, tourism and business. A film of the events, condensing them into a 5 minute summary is currently being produced and will be made available via our website soon.

We also held two **in-conversation** events with artists and specialists working on collaborative projects, this included:

Deep Peat - In conversation with **Kerry Morrison and Sarah Robinson** (Monday 3rd Aug) gaining insight into the collaborative, interdisciplinary work we do in the program. This event allowed us to make further connections and establish new relationships with relevant organisations working in peat restoration and/or using art practice as a means of raising awareness. This talk was streamed live with people tuning in 'in-person' and connecting via Facebook chats. **Isabella Martin and Linda Clarkson** (Monday 17th Aug) As this is a new project we use this opportunity to introduce our upcoming artist-in-residence Isabella to a local dry stone wall trainer. This hour long interview was hosted by Sophie Mahon and has been recorded. This

footage will function as research for Isabella's residency and will also be edited and made available online along with Sarah and Kerrys interviews. We hope to post both films on the Pendlefolk website.



Zoom shot of the third Digital Gathering

Due to the ongoing challenges brought about by COVID19 we are having to continually rethink how we can engage with people in light of changing restrictions in regards to public gatherings. As such we have put a call out for a series of week-long micro residencies, continuing our embedded, collaborative working approach and supporting artists to navigate these difficult times. These residency will allow us gauge public responses to activity and test out new approaches. Through these '**Testing Ground**' residencies artists will come and spend time in the area, creatively responding to people and place and exploring new ways of sharing and creating work with the local community.

Co-ordinating Interpretation and Publicity

A parish noticeboard is now ready to be installed in the information centre in Downham and the design work for a final interpretation panel for the Ribble River's Trust is near completion, there is still some work to be completed on the refurbishment of the building by Ribble Valley Borough Council, and the launch will take place when COVID-19 restrictions have been lifted further.

As highlighted in the Volunteering and Learning Project, the John Muir award was delivered online during the school holidays. As part of that delivery we put together a series of 11 short films to inspire families to get outdoors and carry out the activities; these films were delivered by the PHLP team's project officers Jayne and Alison working with a media consultancy. A final highlights film was produced as a celebration of the activities that took place as part of the award.

Short films were also produced as part of the annual foodie foray events, on-line. As well as being used as part of the event, the films enabled us to maximise the reach for those that couldn't attend and have been made available via an on-line resources page on the Forest of Bowland website:
<https://www.forestofbowland.com/online-event-links>

We have carried out some checks of the PHLP website to ensure it is accessibility compliant and have implemented some small changes. An accessibility statement has also been produced which is now also available from the website.

Consultant Cath Ford has continue to produce illustrations for the 72 season's project which have been shared via the groups' Facebook page.



The Raspberries Turn Red



Morning Sunshine Lights The Grass

Staffing and Programme Management

As noted at the start of this report, it has been a difficult summer but the team are managing well and despite a series of setbacks, all of them out of our hands, we continue to deliver and innovate.

We still plan to put forward a formal request for a scheme extension, for an additional 6-8 months based on savings made in the programme which would push our scheme end date back from April to October 2022: giving us another 2 years with delivery hopefully returning to 'normal' early in 2021. We have also extended the contract for our trainee, Dom, to give him a further 6 months placement with us until the end of March 2021, as his experience with us has not been quite what we had all hoped.